

ETERNAL



PROGETTO BAUCER S.r.l.
Via Emilia Ovest, 32/A, 42048 Rubiera (RE) Italia
Tel. +39 0522 627443 - info@progettobaucer.com

www.progettobaucer.it





ETERNAL

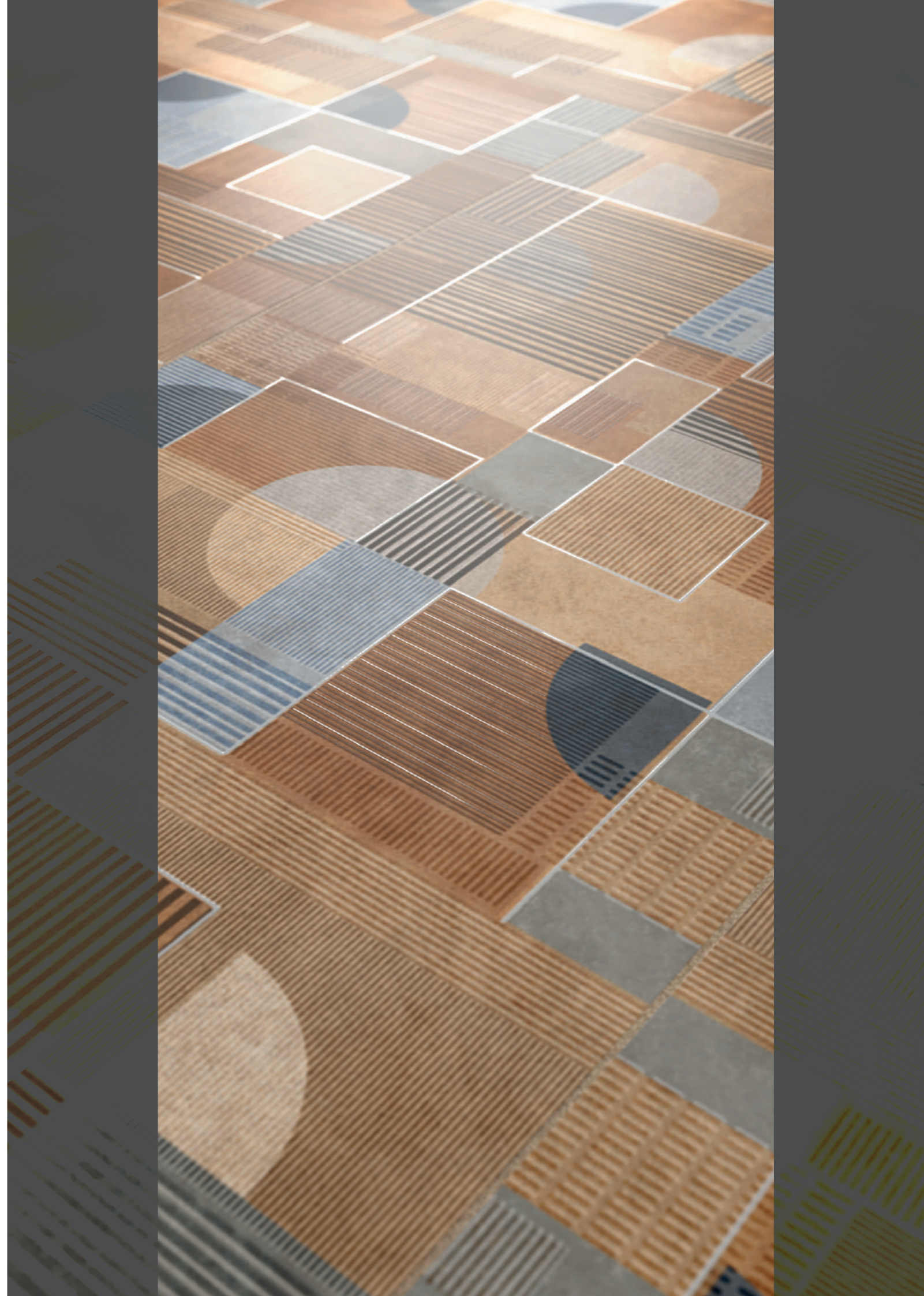
GRES PORCELLANATO SMALTATO
GLAZED PORCELAIN TILE

≅ 9,5 mm R10/R11
60x120 cm 24"x48"

≅ 9 mm R10
60x60 cm 24"x24"
30x60 cm 12"x24"
10x30 cm 4"x12"

≅ 9 mm R11
60x60 cm 24"x24"
30x60 cm 12"x24"

≅ 8 mm R10
30x90 cm 12"x36"





FLOOR Eternal Olive 60x120 WALL Eternal Olive 30x90



FLOOR
Eternal Beige 60x120 R11



WALL Eternal Grey 60x120 | Decoro Fusion Cold 30x90
FLOOR Eternal Grey 60x120



FLOOR Eternal Beige 60x120 WALL Eternal Beige 30x90 | Decoro Flower 30x90



FLOOR Eternal White 60x120 WALL Eternal Beige 60x120 | White 10x30





WALL
Eternal White 10x30



FLOOR Eternal White 60x120 **WALL** Eternal Blue 60x120



FLOOR Eternal Grey 60x120 WALL Eternal Grey 30x90 | Olive 30x90 | Decoro Fusion Cold 30x90





WHITE

GREY

BEIGE

OLIVE

BLUE

ETERNAL

GRES PORCELLANATO SMALTATO
GLAZED PORCELAIN TILE



ETERNAL

FORMATI SIZES

60x120 24"x48"



Rectified R10
± 9,5 mm
2x **147**

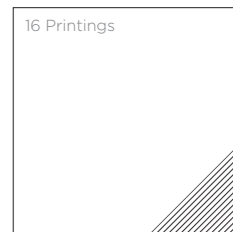
ETE60120WH White
ETE60120GR Grey
ETE60120BE Beige
ETE60120OL Olive
ETE60120BL Blue

Rectified R11
± 9,5 mm
2x **147**

ETE60120WHG White
ETE60120GRG Grey
ETE60120BEG Beige

OUT

60x60 24"x24"



Rectified R10
± 9 mm
3x **137**

ETE6060WH White
ETE6060GR Grey
ETE6060BE Beige

Rectified R11
± 9 mm
3x **137**

ETE6060WHG White
ETE6060GRG Grey
ETE6060BEG Beige

OUT

30x60 12"x24"



Rectified R10
± 9 mm
6x **137**

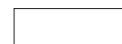
ETE3060WH White
ETE3060GR Grey
ETE3060BE Beige

Rectified R11
± 9 mm
6x **137**

ETE3060WHG White
ETE3060GRG Grey
ETE3060BEG Beige

OUT

10x30 4"x12"



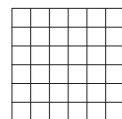
Rectified R10
± 9 mm
32x **164** *

ETE1030WH White
ETE1030GR Grey
ETE1030BE Beige

* Vendita su ordinazione.
Available upon request.

DECORI DECORS

30x30 12"x12"



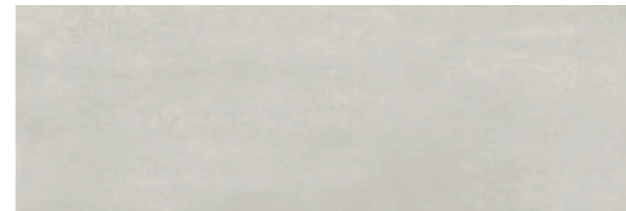
Mosaico 5x5 su rete
5x **52** *

ETEMOSWH White
ETEMOSGR Grey
ETEMOSBE Beige
ETEMOSOL Olive
ETEMOSBL Blue

* Vendita su ordinazione.
Vendita tassativa a scatole
complete.
Available upon request.
Sale in full boxes only.

ETERNAL

FORMATI SIZES ± 8 mm Rectified R10



30x90 12"x36" Rectified
ETE3090WH Eternal White

5x 6 Printings **146**



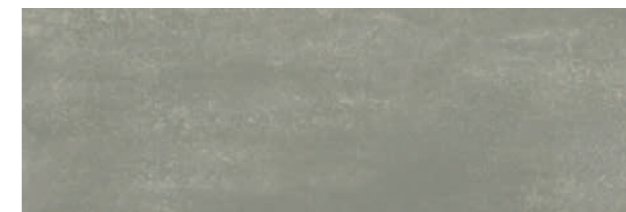
30x90 12"x36"
ETE3090BE Eternal Beige

5x 6 Printings **146**



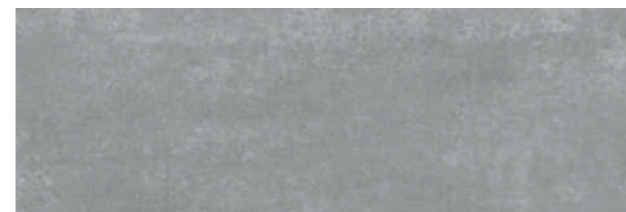
30x90 12"x36"
ETE3090GR Eternal Grey

5x 6 Printings **146**



30x90 12"x36"
ETE3090OL Eternal Olive

5x 6 Printings **146**



30x90 12"x36"
ETE3090BL Eternal Blue

5x 6 Printings **146**



30x90 12"x36"
ETE3090FUSC Eternal Decoro Fusion Cold

5x 1 Printing **147**



30x90 12"x36"
ETE3090FLO Eternal Decoro Flower

5x 3 Printings* **MIX** **147**



30x90 12"x36"
ETE3090FUSW Eternal Decoro Fusion Warm

5x 1 Printing **147**

* **MIX** I decori sono soggetti misti e sono inscatolati in modo casuale. Decorations are mixed subjects and are randomly packed.

Posa consigliata con fuga 2 mm. La ripresa grafica tra i decori può avere un tolleranza contenuta in 2 cm.
Recommended installation with 2 mm joint. The tile graphic between the decorations can have a tolerance included in 2 cm.

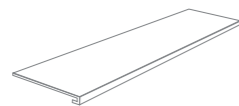
ETERNAL

PEZZI SPECIALI SPECIAL TRIMS



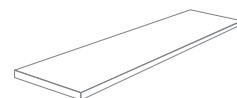
Battiscopa Digitale
SKIRTING
6x60 2.4"x24"
ETE60BATWH WHITE
ETE60BATBE BEIGE
ETE60BATGR GREY
ETE60BATOL OLIVE
ETE60BATBL BLUE

26
15x



Gradino Lineare Costa Retta
STEP
30x120x3 12"x48"x1.2"
ETEGRAWH WHITE
ETEGRABE BEIGE
ETEGRAGR GREY
ETEGRAOL OLIVE
ETEGRABL BLUE

188
2x



Angolare Costa Retta DX
CORNER STEP
30x120x3 12"x48"x1.2"
ETEANGWHDX WHITE
ETEANGBEDX BEIGE
ETEANGGRDX GREY
ETEANGOLDX OLIVE
ETEANGBLDX BLUE

189
2x

Angolare Costa Retta SX
CORNER STEP
30x120x3 12"x48"x1.2"
ETEANGWHSX WHITE
ETEANGBESX BEIGE
ETEANGGRSX GREY
ETEANGOLSX OLIVE
ETEANGBLSX BLUE

189
2x

Angolare Costa Retta DX/SX
CORNER STEP
30x120x3 12"x48"x1.2"
ETEANGWHDSDS WHITE
ETEANGBEDSDS BEIGE
ETEANGGRSDS GREY
ETEANGOLSDS OLIVE
ETEANGBLSDS BLUE

194
2x

* Disponibile solo su ordinazione . Available on demand

	pz/box	mq/box	kg/box	box/pal	mq/pal	kg/pal
60x120 24"x48" Rectified R10 / R11	2	1,44	29,50	36	51,84	1062,00
60x60 24"x24" Rectified R10 / R11	3	1,08	21,30	40	43,20	852,00
30x60 12"x24" Rectified R10 / R11	6	1,08	21,00	48	51,84	1008,00
10x30 4"x12" Rectified R10	32	0,96	19,30	36	34,56	694,80
30x90 12"x36" Rectified R10	5	1,35	23,80	48	64,80	1142,40

PROGETTO BAUCER

CARATTERISTICHE TECNICHE TECHNICAL FEATURES

Norma Di Riferimento . Specification Reference **UNI EN 14411/ISO 13006 Appendice G Bla GL**

Caratteristiche tecniche Technical features	Norma Norm	ETERNAL
LUNGHEZZA E LARGHEZZA LENGTH AND WIDTH		CONFORME IN ACCORDANCE
SPESSORE THICKNESS		CONFORME IN ACCORDANCE
RETTILINEITÀ SPIGOLI STRAIGHTNESS OF SIDES	UNI EN ISO 10545-2	CONFORME IN ACCORDANCE
ORTOGONALITÀ RECTANGULARITY		CONFORME IN ACCORDANCE
PLANARITÀ SURFACE FLATNESS		CONFORME IN ACCORDANCE
ASPETTO ASPECT		CONFORME IN ACCORDANCE
ASSORBIMENTO D'ACQUA WATER ABSORPTION	UNI EN ISO 10545-3	≤ 0,5%
RESISTENZA A FLESSIONE FLEXURAL STRENGTH	UNI EN ISO 10545-4	≥ 35 N/mm ²
MODULO DI ROTTURA BREAKING STRENGTH		≥ 1300 N
DETERMINAZIONE DELLA RESISTENZA ALL'URTO DETERMINATION OF IMPACT RESISTANCE	UNI EN ISO 10545-5	0,90
RESISTENZA ALL'ABRASIONE (METODO PEI) ABRASION RESISTANCE (PEI-METHOD)	UNI EN ISO 10545-7	DA 3 A 5 IN BASE AL COLORE FROM 3 TO 5, ACCORDING TO COLOR
COEFFICIENTE DI DILATAZIONE TERMICA LINEARE THERMAL EXPANSION COEFFICIENT	UNI EN ISO 10545-8	(5,7+5,9) X 10 ⁻⁶ /°C
RESISTENZA AGLI SBALZI TERMICI THERMAL SHOCK RESISTANCE	UNI EN ISO 10545-9	RESISTENTE RESISTANT
DETERMINAZIONE DELLA DILATAZIONE DOVUTA ALL'UMIDITÀ DETERMINATION OF MOISTURE EXPANSION	UNI EN ISO 10545-10	0,0 mm/m
DETERMINAZIONE DELLA RESISTENZA AL CAVILLO DETERMINATION OF CRAZING RESISTANCE	UNI EN ISO 10545-11	RESISTENTE RESISTANT
RESISTENZA AL GELO FROST RESISTANCE	UNI EN ISO 10545-12	INGELIVO FROST-RESISTANT
RESISTENZA AGLI AGENTI CHIMICI RESISTANCE TO CHEMICALS	UNI EN ISO 10545-13	MINIMO CLASSE B MINIMUM CLASS B
RESISTENZA ALLE MACCHIE STAIN RESISTANCE	UNI EN ISO 10545-14	MINIMO CLASSE 3 MINIMUM CLASS 3
	DIN 51130	R10 R11
RESISTENZA ALLO SCIVOLAMENTO SLIP RESISTANCE	C.o.F B.C.R./D.M. 236 14/6/89	μ >0,40
	D.C.o.F / ANSI A326.3	>0,42
REAZIONE AL FUOCO REACTION TO FIRE	96/603/CE	A1 _{FL} /A1