

- 438 Sealing tape
- 014 Sealing tape/  
int. angles
- 015 Sealing tape/  
ext. angles

# Sopro DB 438

## Sealing tape

# Sopro DE 014/015

## Sealing tape for internal/external angles



System-tested, highly elastic, nonwoven-backed sealing tape for flexible, trouble-free waterproofing of perimeter and movement joints, and elastic fittings for durable sealing at internal and external angles, for use in conjunction with liquid-applied Sopro waterproof membranes below ceramic coverings.

- For indoor and outdoor use
- Flexible expansion zone
- Guarantees strong bond
- Alkali-resistant
- Water- and weather-resistant
- For use in conjunction with Sopro waterproof membranes
- With printed scale for extra convenience
- EMICODE system of GEV (German Association for the Control of Emissions in Products for Flooring Installation, Adhesives and Building Materials): EC1<sup>PLUS</sup> ("very-low-emission-plus") rating
- DGNB (German Sustainable Building Council): Top quality level 4, Line 9<sup>1)</sup>

Use

For flexible, trouble-free waterproofing of perimeter and movement joints below ceramic coverings, in conjunction with composite waterproofing systems with membrane and tile finish. Used as ancillary products for waterproof membranes comprising:

- Sopro TDS 823 two-component turbo sealing slurry
- Sopro DSF 523 one-component flexible sealing slurry
- Sopro DSF 623 one-component flexible rapid-set sealing slurry
- Sopro DSF 423 two-component flexible sealing slurry
- Sopro ZR 618 reactive waterproof membrane
- Sopro FDF 525/527 flexible sealing compound
- Sopro PU-FD 570/571 surface sealant for walls/floors

Packaging

**Sopro DB 438:**  
50 m roll (150 cm wide)  
50 m roll (120 cm wide)  
10 m roll (120 cm wide)  
50 m roll (100 cm wide)

**Sopro DE 014/015:**  
As single items

<sup>1)</sup> Based on DGNB (German Sustainable Building Council) criterion "ENV1.2 Local Environmental Impact" (2015 version).

## Properties

### Sopro DB 438

Expansible, nonwoven-backed, high-performance sealing tape with extra-high alkali resistance for flexible, trouble-free waterproofing of perimeter and movement joints. Guarantees strong bond with Sopro waterproofing systems. Easy bedding of sealing tape due to flexible expansion zone.

Sopro DB 438 accommodates expansion and seals perimeter and movement joints against surface water infiltration. It is alkali-, water- and weather-resistant.

### Sopro DE 014/015

Alkali-resistant, preformed angles made from Sopro DB 438 sealing tape for flexible, trouble-free waterproofing of perimeter and movement joints at internal/external angles.

Installed in conjunction with Sopro DB 438 sealing tape or Sopro DBF 638 pre-folded sealing tape.

## Application

Apply selected waterproof membrane material up to approx. 10 mm from edge of perimeter or movement joint. Place Sopro DB 438 over middle of joint and gently press down so as to form as nearly as possible a right angle.

Bed free nonwoven edges in fresh waterproof membrane material. When placing following coat of membrane material, completely overcoat Sopro DB 438 with two coats in required thickness.

Use of Sopro DE 014/015 sealing tape fittings is recommended at corners, internal and external angles. Provide min. 5 cm lap at end joints between lengths of sealing tape.

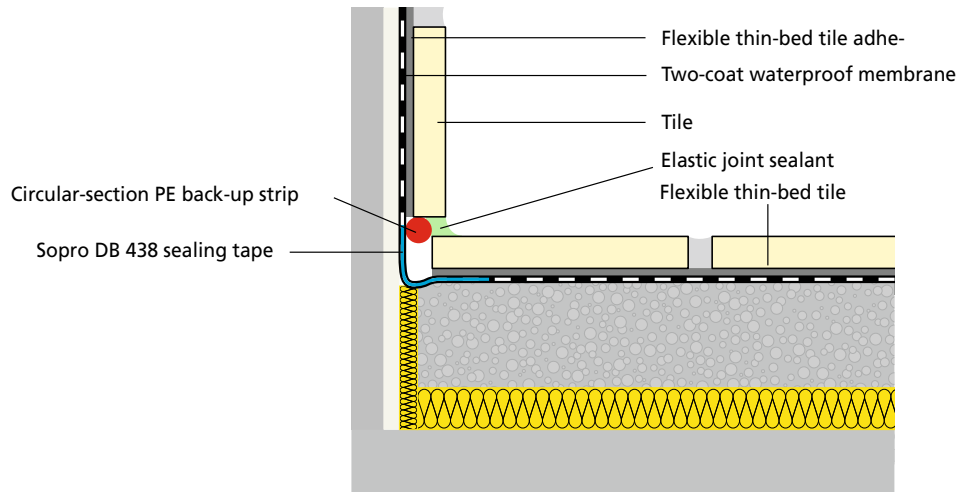
For swimming pool or underwater applications, please contact our Technical Service team.

**Note on bonding at joints:** A reactive, two-component Sopro sealing slurry or (MS polymer-based) Sopro sealing adhesive should be used to bond sealing tape and fittings.

Moreover, under DIN 18534, tape and fittings shall always be subsequently overcoated over full surface and beyond edges with waterproof membrane.

For one-component Sopro sealing slurries and Sopro FDF flexible sealing compound, a minimum drying time of 28 days shall be ensured. In case of shorter construction windows or unfavourable weather conditions on site (e.g. cool or damp weather), then only a reactive, two-component Sopro sealing slurry or (MS polymer-based) Sopro sealing adhesive shall be used.

**All suitable Sopro products for standards-compliant application are listed under "Test certificates". Please observe technical product information for relevant system products!**



## Test certificates, test reports and licences

### PG-AIV-F

National test certificate (abP) for composite waterproofing systems with membrane and tile finish, for structural waterproofing in conjunction with Sopro DSF 523, DSF 623, DSF 423, TDS 823, ZR 618, FDF 525/527, PU-FD 570/571 and other Sopro components.

### PG-MDS

National test certificate (abP) for structural waterproofing in conjunction with Sopro TDS 823, ZR 618 and other Sopro components.

### EMICODE (system of GEV)

EC1<sup>PLUS</sup> ("very-low-emission-plus") rating

Exempt from labelling requirements under Regulation (EC) No 1272/2008 (CLP).

All standard precautions for the handling of construction materials/chemicals shall be taken.

**Precautionary statements:** P102 Keep out of reach of children. P332+P313 If skin irritation occurs: Get medical advice/attention.

## Safety precautions

This document serves as a product description and sets out general details, based on empirical and test data, that take no account of specific cases of application. No liability may be construed and no claims shall be accepted in respect of these details. Should you require assistance, please contact our Technical Counselling Service. The latest version of this product information as well as the relevant safety data sheet to EC Regulation No. 1907/2006 are available at [www.sopro.com](http://www.sopro.com)!

### North Germany Sales

Sopro Bauchemie GmbH  
Lienener Straße 89  
D-49525 Lengerich  
Fon +49 5481 31-314  
Fax +49 5481 31-414

### East Germany Sales

Sopro Bauchemie GmbH  
Zielitzstraße 4  
D-14822 Alt Bork  
Fon +49 33845 476-90  
Fon +49 33845 476-93  
Fax +49 33845 476-92

### South Germany Sales

Sopro Bauchemie GmbH  
PO Box 420152  
D-65102 Wiesbaden  
Fon +49 611-1707-243  
Fax +49 611-1707-250

### Export Sales

Sopro Bauchemie GmbH  
PO Box 420152  
D-65102 Wiesbaden  
Fon +49 611-1707-239  
Fax +49 611-1707-240

### Austria Sales

Sopro Bauchemie GmbH  
Austria  
Lagerstraße 7  
A-4481 Asten  
Fon +43 7224 67141-0  
Fax +43 7224 67181

### Switzerland Sales

Sopro Bauchemie GmbH  
Branch Thun/Schweiz:  
Biergutstrasse 2  
CH-3608 Thun  
Fon +41 33 3340040  
Fax +41 33 3340041